

# SUSTAINABLE GROUNDWATER MANAGEMENT

## IN THE TRACY SUBBASIN

Local water managers are working together to create a roadmap to manage groundwater resources for future generations as part of a new state law called the Sustainable Groundwater Management Act, or SGMA.

## What is SGMA?

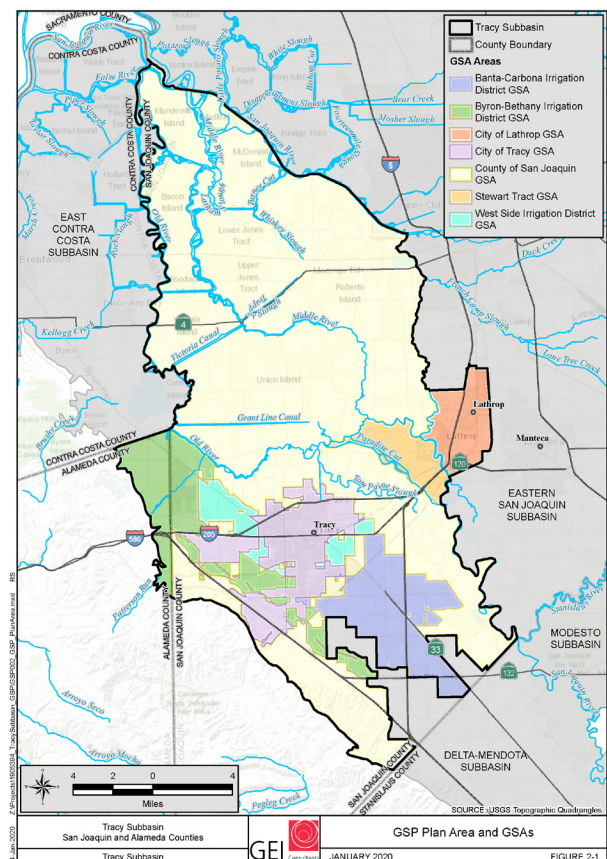
The **Sustainable Groundwater Management Act**, known as “SGMA” (pronounced sig-ma), is a California State law that was passed in 2014. The goal of SGMA is to ensure the long-term sustainable management of the state’s groundwater resources. SGMA requires agencies throughout California to meet certain requirements. These include:

- Form new Groundwater Sustainability Agencies.
- Develop and adopt a Groundwater Sustainability Plan by January 2022
- Update the plan every five years.
- Demonstrate groundwater sustainability by 2042

## What is the Tracy Subbasin?

Some or all of the water for your home, business, or farm may come from groundwater. This may be true even if you get your water from your local city, county, or irrigation district. This groundwater comes from the Tracy Subbasin, shown to the right, which underlies our region.

The Tracy Subbasin is primarily located in San Joaquin County, with a small part in Alameda County. It is primarily bounded by the San Joaquin River on the north and east and the San Joaquin County line on the south and west. **The Tracy Subbasin is not considered to be in an overdraft condition** due to the long-term, collaborative management of the subbasin’s groundwater resources by local water managers.



## Which Agencies are Managing Groundwater?

Seven Groundwater Sustainability Agencies (or “GSAs”) have formed in the Tracy Subbasin:

- Banta-Carbona Irrigation District
- Byron Bethany Irrigation District
- County of San Joaquin
- City of Lathrop
- City of Tracy
- Stewart Tract
- Westside Irrigation District.

These agencies are collaboratively developing one Groundwater Sustainability Plan for the subbasin.

## What is a Groundwater Sustainability Plan?

A Groundwater Sustainability Plan is a roadmap for how local managers will manage the subbasin’s groundwater resources now and into the future. The plan will identify a water budget for the subbasin, goals to achieve sustainability of the subbasin’s groundwater resources, and projects and actions to continue the reliability of the region’s groundwater supplies. **The Groundwater Sustainability Plan is due to the state on or before January 31, 2022.** The draft plan is anticipated to be released for public review in summer 2021.

## How can I get involved?

The best way to be kept informed about development of the Groundwater Sustainability Plan is by signing up as an interested party on the Tracy Subbasin website at: [www.tracysubbasin.org](http://www.tracysubbasin.org). You can provide comments on the draft Groundwater Sustainability Plan by attending public meetings and workshops or submitting a comment on the Tracy Subbasin website. The website provides a list of regularly scheduled public meetings.

Local agencies have collaboratively managed groundwater resources in the Tracy Subbasin for decades. As a result of these efforts, groundwater resources in the Tracy Subbasin are already reliable. The Groundwater Sustainability Plan will provide a roadmap to continue to the reliability of the region’s groundwater supplies.

**Learn more at [tracysubbasin.org](http://tracysubbasin.org).**